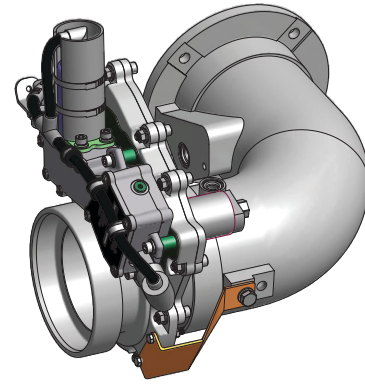


# Air Intake Shut-off Valve

Model 7001

## Overview

Hydraulic fracturing technology requires the use of heavy duty high horse power diesel engine. Hydrocarbon release in an area where a diesel engine is operating can lead to diesel engine runaway which can be a highly dangerous situation. Once an engine begins to run on the external fuel source, turning off the ignition will have no effect. The engine will continue to run and overspeed leading to mechanical failure or explosion. The newly released 7001 series Air Intake Shut-off valve was designed for the wear and tear of the frac industry. The valve will effectively shut down a runaway diesel engine by closing off engine intake air.



## Key features and benefits

- Corrosion resistant, anodized aluminum and stainless steel construction
- Rated for continuous working temperature from -40°C to +246°C
- Designed for post-turbo temperatures
- IP 67 Rated Solenoid /Actuator
- Designed for high vibration environments
- Male/female mormon flange connections (can be coupled directly to Cummins MTU4000 engine intakes)
- Position switch integrated into actuator housing
- Switch is not exposed to charge air temperature/debris

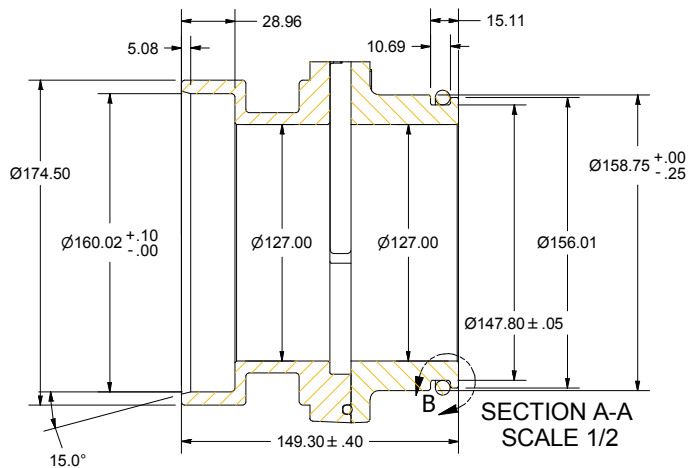
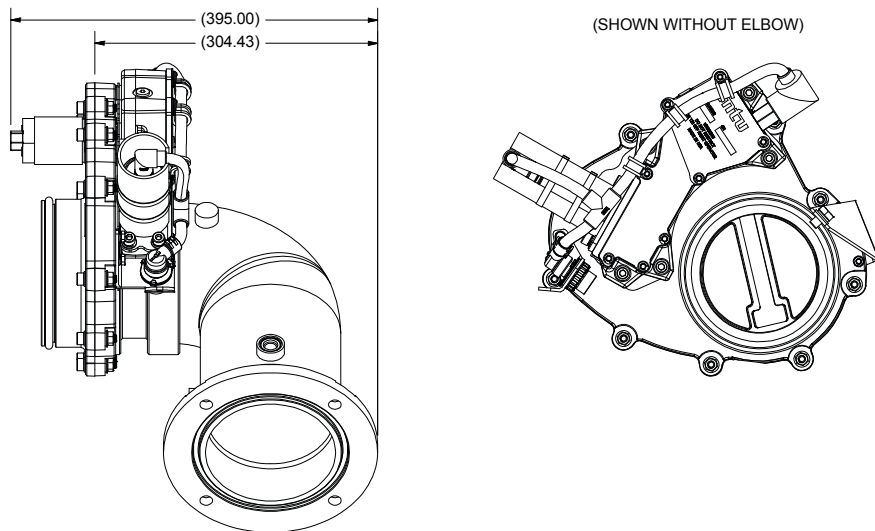
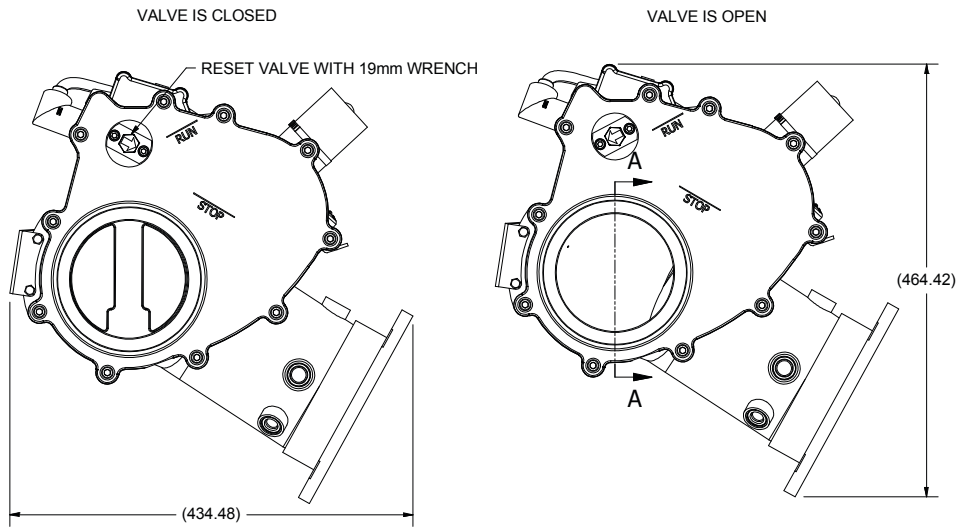
## Typical Applications

Heavy duty high horse power frac diesel engines, Offshore Production Engines, Drilling Industry, Fire Trucks, Hazardous Material Vehicles, Ambulances, Marine Engines, Bulk Fuel Haulers (Tankers), Power Generation (Gen Sets), Well Service Vehicles, Mining Equipment, Locomotives, Aircraft Mobile Support Equipment, Fuel Transfer Pumps, Fire Pumps and any other diesel engine application in the well servicing, refinery, or mining industry (where hydrocarbon release is a risk), Offshore Production Engines, Drilling Industry

# Air Intake Shut-off Valve

Model 7001

## Dimensions



# Air Intake Shut-off Valve

## Model 7001

### Specifications

<b>Standard materials</b>	Valve body	Hard anodized aluminum
	Gate	Brass
	Seals	Viton/Silicone
	Safety control operator	Anodized aluminum
<b>Maximum intake air temperature</b>	-40°C to 100°C	-40°F to 212°F
<b>Valve Size</b>	5" valve size	127 mm
<b>Net weight</b>	15 kg (34 lbs)	
<b>Max Charge Air Pressure</b>	5 bar	
<b>Solenoid</b>	Voltage	16.8 - 31.2 Volts DC
	Max current draw	42.2 A @ 31.2 VDC & -40°C
	Inductance	3.5mH ±40°C
	Actuation Sequence @ 31.2 VDC, 100°C	Max 2s ON, Min 1s OFF Max 2s ON, Min 300s OFF
	Actuation Sequence @ 24 VDC, 25°C	Max 2s ON, Min 1s OFF Max 2s ON, Min 60s OFF
<b>Switch</b>	5 Amp resistive load max >0.25W	

### How to order

Use the tables below to select the unique specification of your Model 7001 Intake Air Shut-off Valve:

Example: **7001** **A** **BB** **C** - **DDD**

A	Valve Size	BB	Valve Operator	C	Switch Options	DDD	Connection Options
5	5 inch bore	72	Electric Solenoid, 24VDC	A	Valve Open = Switch Closed	RZH	Left side with Elbow, 33 kohm Shunt Resistor switch
				B	Valve Open = Switch Open	RZI	Right Side with Elbow, 33 kohm Shunt Resistor switch
						RZJ	Left side without Elbow, 33 kohm Shunt Resistor Switch
						RZK	Right side without Elbow, 33 kohm Shunt Resistor Switch
						HAF	Left side with Elbow
						HAG	Right side with Elbow

Note: AMOT does not qualify the valve for specific applications. Consult the engine and valve specifications.

# Air Intake Shut-off Valve

---

Model 7001

## Service Kit

---

Electrical Components: Part No. 3650268

Flange o-ring: Part No. 3648696

### Americas

---

AMOT - USA  
Tel +1 (281) 940 1800  
Fax +1 (713) 559 9419  
sales@amotcom

Roda Deaco - Canada  
Tel +1 (780) 465 4429  
Fax +1 (780) 469 6275  
info@rodadeaco.com

### Asia Pacific

---

AMOT - China  
Tel +86 21 6279 7700  
Fax +86 21 5237 8560  
shanghai@amot.com

AMOT - Singapore  
Tel +65 6408 6265  
Fax +65 6293 3307  
singapore@amot.com

### Europe, Middle East and Africa

---

AMOT - England  
Tel +44 (0) 1284 762222  
Fax +44 (0) 1284 760256  
info@amot.com

AMOT - Germany  
Tel +49 (0) 40 8537 1298  
Fax +49 (0) 40 8537 1331  
germany@amot.com

[www.dieselsafety.com](http://www.dieselsafety.com)

